

Inside Outside

THE INDIAN DESIGN MAGAZINE

ISSUE 332 FEBRUARY 2013

₹ 50

Somaya and Kalappa Take Us Through A Journey Into The Interiors Of India With A Hotel They Have Designed In Mumbai

COVER STORY:

The funky Office & Studio of Ankita Sweety & Pratyosh Chander in Delhi

Aamir and Hameeda Sharma Create a 'white box' in Hyderabad

ALSO FEATURING Dada Partners, Rajiv Saini, Bhavna Jacob, Bijith Bhaskar



Boxes of colours

Ankita and Pratyosh,
the designer duo at
Studio An-V-Thot Architects
always wanted their office to be
a world of colours and liveliness.
This was the driving force behind
their design, when they took up
an office space in the chaotic
urban environment of Delhi.

PHOTOGRAPHS: SAPTORSHI MAJUMDAR, COURTESY THE ARCHITECTS





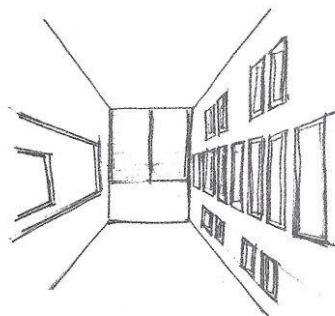
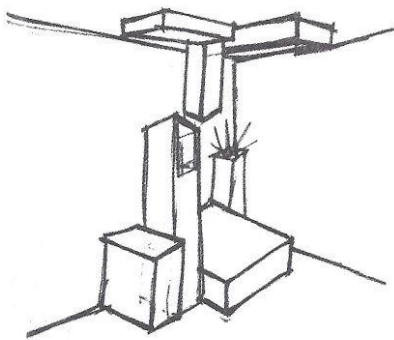
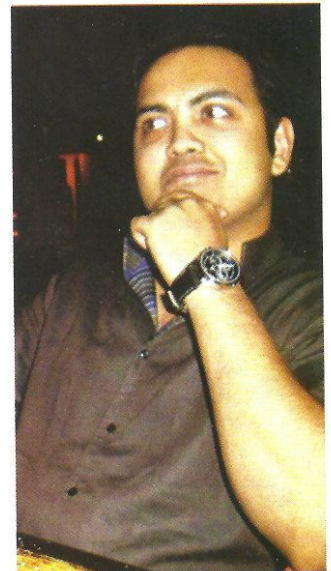


The 'ladder' behaves as the floating member of the team, with flexibility to change its position and dramatically add depth, life and colour in any given frame.

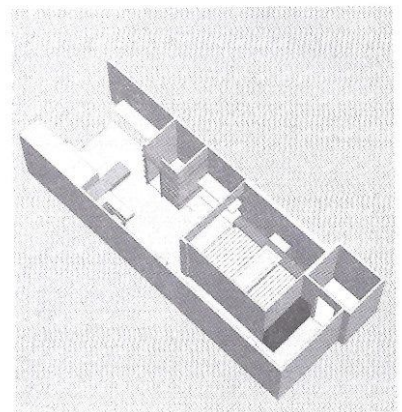



Ankita Sweety

Pratyoosh Chandan



View of Corridor





Grey PVC flooring is used throughout the office except for the principal cabin, where wooden laminate has been used. The neutral tones of the flooring balance the vibrancy of the studio.



Ankita and Pratyosh were faced with a challenge: they had to design and develop their own space in the office within a very strict budget and an equally strict timeline. After two months of rigorous work, multiple on-site obstacles and simultaneously working from their old office, their joy in their newly done-up own space is clearly evident.

As the door opens one gets a feel of multiple frames of illusion and the spaces emerge as question marks, bringing out a youthful feeling of inquiry from within. The free flowing layout gives us contrasting spatial experiences where directions can be felt through viewing experiences. The first volume of space has a small studio with high display panels to its left, facing the library-cum-waiting area. The studio welcomes one in with its optimum and precise use of the colour blue in the niche of the sunken waiting area. Symmetrically positioned pigeon holes for display of books and magazines are white as the backdrop. The use of dark wallpaper here adds contrast.

The 650 sq ft studio has been planned on a hierarchy system. This was achieved by placing a dark room in the centre, which gives rise to a junior zone and a senior zone, while an imaginary path thus created, from one end to the other end of the office, takes the visitor through various volumes of spatial experiences. The third zone is created in the rear-most area which caters to the services without disturbing the rest of the office. The irony of the dark room which is clad with bands of yellow, blue and brown clearly shows the intention of the designers to add a touch of humour.

The 'boxes of colours' were brought to life with the intention of breaking free of the conventional storage design and to express an explosion of harmony, balance and colour. The space acts as a display for project models but is in fact, a model in itself. A casual seating is an add-on to the space and interestingly, also acts as transitional space and focal point of the whole area.

The space next to the dark room acts as the senior studio, again with high display panels to create an aesthetically pleasing environment while serving the purpose of maximum display for an architect's studio. This area also caters to a discussion/conference area.

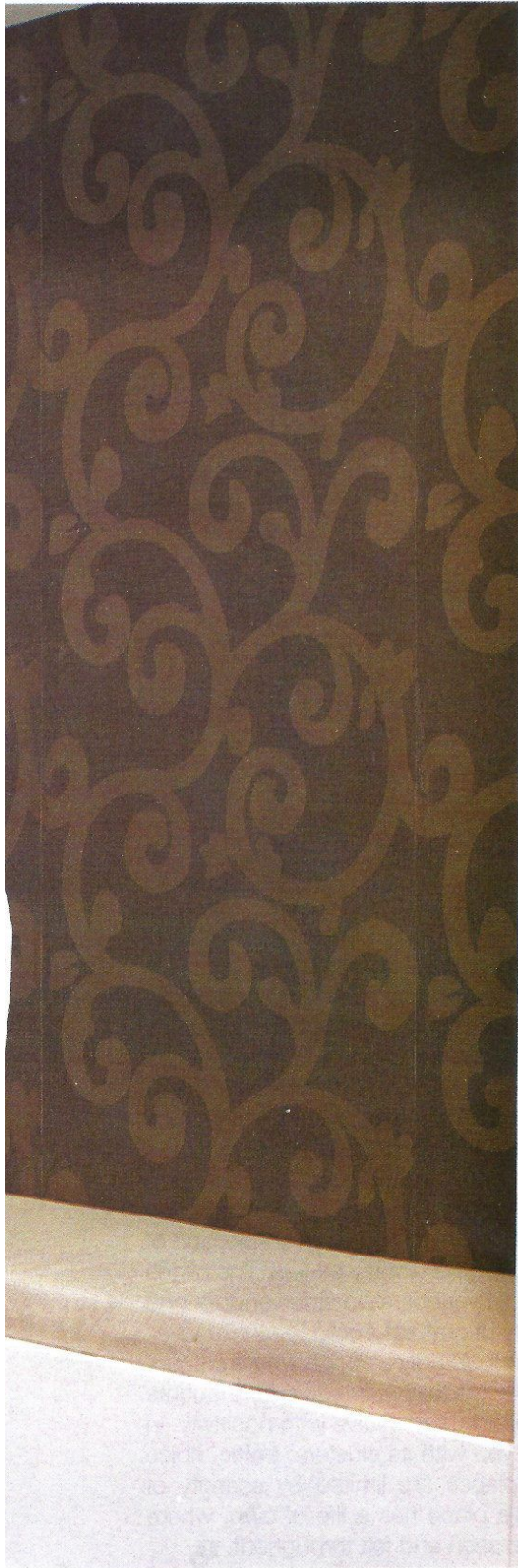
The 'ladder' behaves as the floating member of the team, with a flexibility to change its position



FACT FILE:

Design Team: Studio An-V-Thot
Architects Pvt Ltd
Site In-charge: Nitish Kumar
Turnkey Consultants: Mehta Enterprises
Area: 650 sq ft
Duration: 45 days
Completion: June 2012
Cost of Project: ₹ 7,50, 000
Location: New Delhi

The 'boxes of colours' were brought to life with the intention of breaking free of the conventional storage design and to express an explosion of harmony, balance and colour.



and dramatically add depth, life and colour in any given frame.

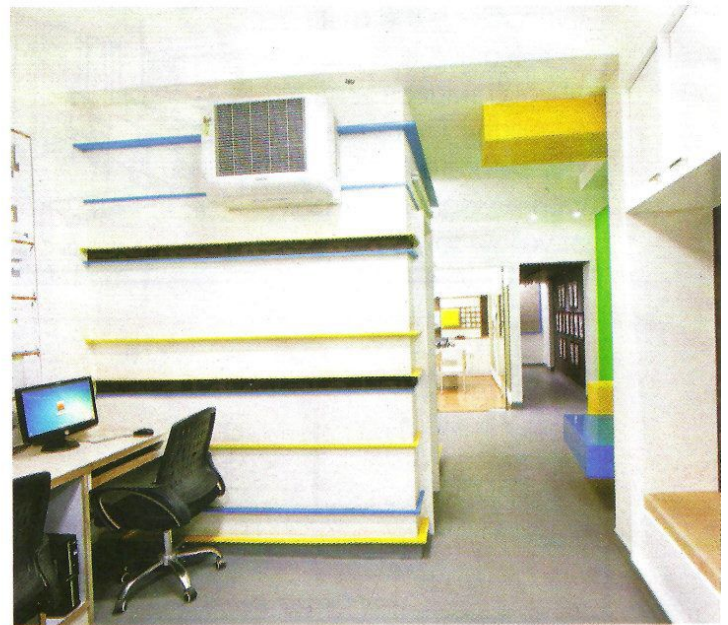
The exhibition space has a dropped down ceiling to break the monotony and give a dramatic effect to the whole area, while adding a story to the passage. This dark corridor with the play of light acts as a display unit and serves as the contrast to the vibrant playfulness of the rest of the studio.

The principal cabin overlooking the rest of the office is again a mix of youthfulness and authority. This was achieved through the use of low saturated colours with a single small box of yellow to intentionally add zing. The reason for using white furniture is to give importance to the vibrancy of displays all around. Apart from three chairs for visitors, the linear and elongated seating here with floating supports serves the basic necessity of multiple visitors, while increasing the depth of vision.

MATERIALS

The selection and placement of various materials was dependent on two main criteria: hierarchy of importance; colour, texture and reflectivity.

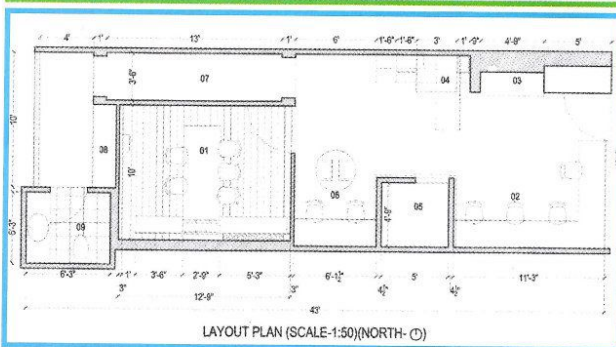
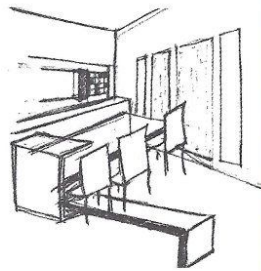
Except for the principal cabin, which has wooden laminate flooring, grey PVC flooring is used throughout the office to add a neutral tone and balance the vibrancy of the studio. A large amount of MDF finished with German based PU pigment paint has been used for the blue, yellow and white. It completely changes the appearance of wood and brings



architects' ambience



The principal cabin overlooking the rest of the office is a mix of youthfulness and authority. There are low saturated colours with a single small box of yellow to add zing.



in reflectivity and shine to the surface. This leads to a dramatic environment with the play of shadows, light and reflection. Dark wallpapers can be seen at various intervals. Gypsum board partitions and false ceilings were used because of time constraints. Glass is also used for partitions, which provide privacy while still managing to bring in lightness and transparency. A lot of light had to be used in the creation of the dynamic ambience, so LEDs were an obvious choice for their low energy consumption quality. Low density fibre boards with a selection of fabrics were used for the display panels. The blinds were procured from various road side vendors and have a high quality of craftsmanship.

The Studio is undoubtedly a space where colours add a playfulness so as to give freedom for thoughts and ideas to take birth and evolve with positivity. In a city that drains you with its clusters, traffic, noise and where workplaces are limited by scarcity of space and air; this place has a life of own, where the energy can be seen and felt throughout. 